



# MaaS360® Mobile Device Management



MaaS360 helps IT administrators streamline the process to provision, manage and secure today's expanding suite of smartphones and tablets, all from a single portal.

## INSTANT MOBILE DEVICE MANAGEMENT

MaaS360 for mobile devices is an easy to use platform that includes all of the essential functionality for end-to-end management of iOS, Android, Symbian, BlackBerry, Windows, and webOS devices. Deployment is quick and in just a few clicks, IT can start enrolling devices and get productive immediately by managing the entire mobile device lifecycle - from enrollment to security, monitoring, application management and support. With integrated reporting and analytics, MaaS360 platform provides a whole new level of centralized visibility and control for actionable insights into your entire mobile device landscape.

- OTA configuration
- Passcode enforcement
- Security policy management
- Remote lock and full wipe
- Selective wipe of corporate data
- Device restrictions
- Asset management
- Self-service portal
- Real-time reporting
- Corporate app storefront



## SECURE ALL MOBILE DEVICE PLATFORMS

MaaS360 supports all major smartphone and tablet platforms including iOS, Android, Windows Phone, BlackBerry, Symbian, Windows Mobile, and Palm WebOS - in both Exchange and Lotus Notes environments.

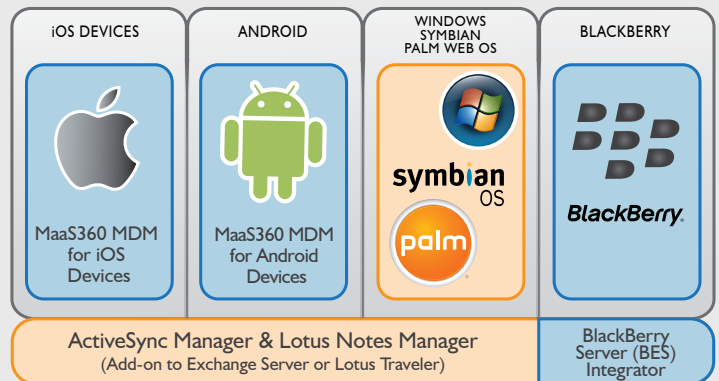
## EMBRACE EMPLOYEE-OWNED DEVICES

MaaS360 provides workflows to discover, enroll, manage and report on personally owned devices as part of your mobile device operations.

## EXPERIENCE SIMPLE DEVICE ENROLLMENT & APPROVAL

MaaS360 provides auto-quarantine for Exchange, and alerts IT personnel to approve all new devices. Additionally provides for easy user self-enrollment, via web, email or SMS.

## Mobile Users & Devices



CORPORATE INFRASTRUCTURE & DATA

## MaaS360® Mobile Device Management

### APPLE IOS DEVICES

iPhones and iPads are fully supported using the Apple Mobile Device Management API and the Apple Push Notification service (APNs) built into the iOS 4 Mobile Operating System. Hardware and software inventory details can be collected and displayed. Policies and profiles can be applied, and actions can be pushed such as lock, password change, full wipe, and selective wipe of corporate data.

### ANDROID DEVICES

Using a lightweight agent that interfaces with the Android Mobile Device Management API Framework, hardware and software inventory details can be collected and displayed. Policies and profiles can be applied, and actions can be pushed. Secure email container encryption is provided through integration with Nitrodesk's TouchDown client for Android.

### BLACKBERRY DEVICES

MaaS360 Mobile Device Management for BlackBerry provides a lightweight agent that interfaces with your existing BlackBerry Enterprise Server (BES). MaaS360 uses native BES APIs and Toolkits to automatically discover connected devices and policies. MaaS360 then provides detailed hardware and software inventory details, assignment of policies, and the ability to push actions to your connected devices.

### ACTIVESYNC or LOTUS NOTES TRAVELER CONNECTED DEVICES

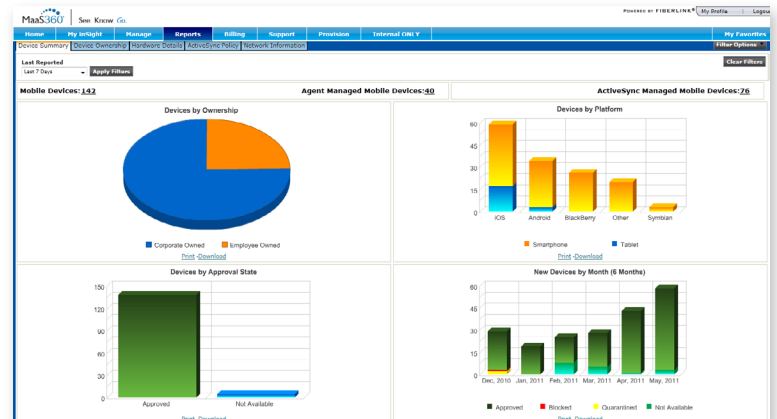
MaaS360 makes your mobile email and device support more secure and compliant through improved management, device approvals, and reporting. Using a simple and efficient integration with Microsoft Exchange Server or Lotus Notes based on our Cloud Extender™ technology, MaaS360 discovers all connected devices, including iOS, Android, BlackBerry, Symbian, webOS, and Windows, making it easy to quarantine and approve new devices, create and assign policies, and perform critical support functions such as remote wipe. MaaS360 provides executive and operational dashboards and role-based administrative access for email, network, security, and help desk personnel that need access to manage these devices.

### CORPORATE APPLICATION CATALOG

MaaS360 provides organizations with a private, easy-to-use system to categorize, distribute and update in-house developed enterprise applications, as well as view Apple Store and Android Market applications recommended, approved, and unapproved by the enterprise.

### MOBILITY INTELLIGENCE

MaaS360 delivers an interactive, graphical summaries and detailed views of your mobile device operations and compliance with actionable insights. You will gain visibility into the distribution of mobile devices across mobile operating system platform, approval status, device capabilities, ownership and other useful summaries and details.



All brands and their products, featured or referred to within this document, are trademarks or registered trademarks of their respective holders and should be noted as such.

### For More Information

To learn more about our technology and services visit [www.maaS360.com](http://www.maaS360.com).  
 1787 Sentry Parkway West, Building 18, Suite 200 | Blue Bell, PA 19422  
 Phone 215.664.1600 | Fax 215.664.1601 | [sales@fiberlink.com](mailto:sales@fiberlink.com)